

MAGEE AUCTION & REALTY
 3908 Heritage Park Road
 Piggott, AR 72454



GOING...GOING...GONE!!!

44TH ANNUAL OPEN & ABSOLUTE FARM EQUIPMENT FFA AUCTION

Saturday, April 7, 2018

Early Start Time: 8:00 a.m.

TERMS

ALL SALES FINAL- Complete payment day of sale. Cash, certified or cashier's check. Personal or company checks will be accepted and MUST be accompanied by a letter of credit from your bank unless you have established recent, satisfactory financial status with Magee Auction Company. All purchases are subject to verification with your bank or financial institution. Immediate possession of all merchandise upon proper settlement. Not responsible for accident, injury or theft and all items at buyer's risk as soon as sold. Equipment sold as is, where is, no warranties or guarantees implied. List subject to change.

RULES AND CONDITIONS-Anyone wishing to bid on items at the auction must register and obtain a bidder's card. Anyone bidding for an account other than their own must register as such. Auctioneer reserves the right to reject the bid of anyone who is not a registered bidder.



MAGEE AUCTION & REALTY

Gary N. Magee, Auctioneer

Ramona Magee, Broker

AR Lic. #3 - Est. 1970

3908 Heritage Park Road, Piggott, AR 72454

Phone 870-598-2689 • Cell 870-598-7334 • Fax 870-324-4117

Visit our website at www.garymageeauction.com



44TH ANNUAL OPEN & ABSOLUTE FARM EQUIPMENT

AUCTION

SATURDAY, APRIL 7, 2018

NOTE EARLY START TIME - 8 A.M.

PIGGOTT, ARKANSAS

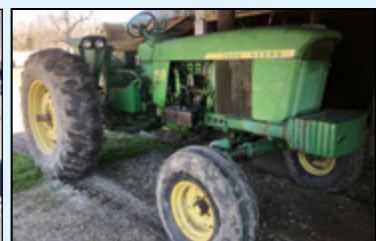
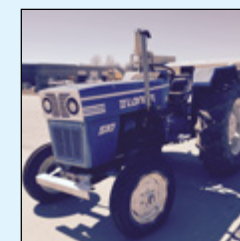
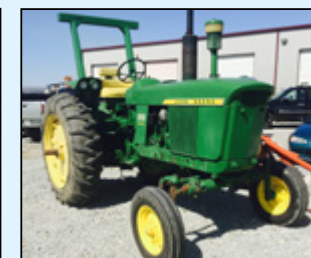
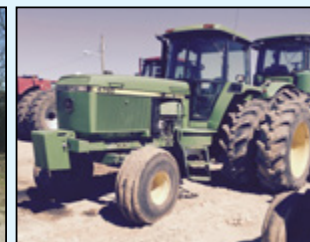
LOCATION: CLAY COUNTY FAIRGROUNDS, PIGGOTT, AR

PHYSICAL ADDRESS: 658 East North Street (From Stop Light on Hwy. 62/1, go East approximately 1/4 mile to North Garfield Street, turn onto North Garfield and go direct to Fairgrounds.)

AUCTIONEER'S NOTE: Sponsored by the Piggott FFA Chapter, this is the last open sale of the season and you will find almost anything at this sale. You can expect much more equipment than what is listed. Personnel will be at sale site starting Monday, APRIL 2, 8 A.M. to 5 P.M. to check-in equipment. Absolutely no equipment checked-in sale day. For more info on this sale contact FFA Advisor Casey Simpson at 870-219-0740, any FFA member at 870-598-3815 or sales manager, K. Latimer @ 870-324-0455.

TRACTORS

- Apache Sprayer #760, 60 ft. boom, trimble guidance system, works
- JD 7730, R50 dualls, 4000 hrs., Star Find 3000, frt. wts., qk.ht., 6 remotes
- JD 4760, c/a, frt. wts., 38 in. duals, 3 remotes, 9275 hrs.
- JD 4020, full frt. wts., 2 remotes console model., 2 owner tractor, super nice
- JD 4010, diesel, '62 mo., 2 owner, w/JD 46 Loader w/hay spike
- JD 3010, gas, w/f. remotes
- JD 3010, gas, w/ Loader
- JD 3010, diesel, w/f, frt. wts., single remote
- JD 3010, diesel, 2 post RG, single remote
- JD 1020, gas, wide frt., 3 pt. ht.
- JD 6200, 2 post roll guard
- JD 5310, syncra shuttle, 3350 hrs.
- Mahindra 8560, c/a, 85 hp, 540 hrs., Like New
- Long 510, diesel
- Long 510 w/Long Loader
- IH 1486, 1 owner, good condition



VISIT OUR WEBSITE WWW.GARYMAGEEAUCTION.COM FOR MORE INFORMATION



MAGEE AUCTION & REALTY

Gary N. Magee, Auctioneer

Ramona Magee, Broker

AR Lic. #3 - Est. 1970

3908 Heritage Park Road, Piggott, AR 72454

Phone 870-598-2689 • Cell 870-598-7334 • Fax 870-324-4117

CONSTRUCTION, DIRT, IRRIGATION

- JD Loader #720 w/brackets, hay spear, ffts 4250 & down
- Sheepfoot Roller, hyd. lift, 4 lift wheels
- Hurricane Ditcher, Nice
- Prime Levee Plow #1020
- Rhino Blade #R950, 8 ft., hyd., New
- JD Hydraulic Blade, 10 ft.
- Howse Box Blade, 6 ft., 3 pt. ht.
- Killifer Blade, 12 ft.
- Long Tiller, 5 ft., 3 pt. ht
- JD Power Unit #329 w/trailer (completely OH)
- IH Power Unit #DT363, 160 hp

TRUCKS, TRAILERS

- Dodge Ram Truck 3500, 2009 mo., 1 ton dually, air ride, Southwest Grill Guard, back bumper, running boards, all matching, leather, hard loaded, 207,000 miles, Sharp Truck
- Freightliner, 2004 mo., day cab, Eaton Fuller, Detroit, new rubber, 428,000 miles
- Oldsmobile Nero, 2004 mo, red
- Chevy Impala Police Car, 2005 mo., 4 dr.
- Delta Gooseneck Horse Trailer, 3 horse, w/living quarters
- Gravity Flow Trailer, double hopper, tandem rear wheels, New tires
- Jayco Camper, 2000 mo., hybrid
- Fleetwood Pop-up Camper w/ air, sleeps 6
- Gooseneck Trailer, 16 ft., 7000 lb. axle
- Stockman Trailer, bumper ht., 15 ft.

- Utility Trailer, bumper ht., 20 ft., heavy duty
- Utility Trailer, bumper ht., single axle, 12 ft. Trailer, 12 ft. w/tail gate
- Feed Cart Trailer, 60 bushel w/rear auger
- Unifirth Header Trailer 35 ft.
- Unifirth Header Trailer, 25 ft.
- 2-Header Trailers, 30 ft.
- Hilbros Grain Cart #475
- JD Grain Cart, #12NA
- A&L Grain Cart #456
- Feed Wagon

HAY, CATTLE

- New Holland Silage Round Baler #BR7070, Crop Cutter, net wrap or twine
- JD Cutter/Conditioner #926, Mo Co
- Vicon Round Baler #RV1601, Progressive Density Plus
- JD Hay Cutter #835, 8 ft.
- Poly Stock Tank
- Metal Stock Tank
- Lot of Cattle Panels, various lengths
- Feed Bunks, various lengths
- Concrete Cattle Feed Trough, 12 ft.

LAWN, GARDEN & ATV

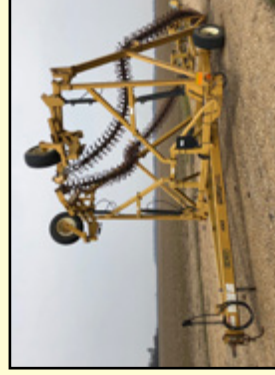
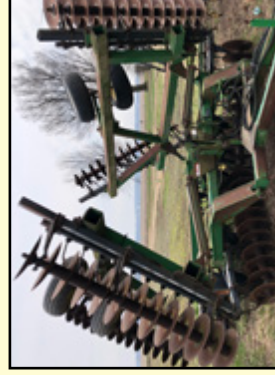
- Cub Cadet Riding Mower #GTX1054, 54 in. cut, Clean
- JD Riding Mower #445, zero turn, 54 in. cut
- Cub Cadet Riding Mower
- JD Riding Mower
- Mantis Garden Tiller, small
- Murray Garden Tiller, small

- Bolens Push Lawn Mower
- JD Push Lawn Mower, Big Wheel #JS60H
- Commercial Cub Cadet Weed Eater
- Kubota RTV 900 Limited Edition, diesel, 4x4, hyd. dump bed 1 owner, 277 hours

FIELD EQUIPMENT

- KMC Phillips Rotary Harrow, #4505, 45 ft.
- JD Disk #630, 28 ft.
- Landol Cultivator, 12 row, 38 inch
- W&A Hippers, 12 Row, 38 inch
- Offset Disk #2422, 8 ft.
- JD Cutter #HX15, bat wing, chain guard, Like New
- JD Cutter #1418, 3 pt. ht.
- Triple K Field Cultivator w/rolling baskets
- Triple K Field Cultivator, S-Time, 20 ft
- Brilliant Cultipacker, 15 ft., dual wheel
- Brilliant Cultipacker, 16 ft.
- JD Grain Drill #8300, 12 ft.
- Woods Ditch Bank Rotary Mower
- Howse Cutter, 10 ft., pull type
- JD Chisel Plow, 3 pt. ht., 13 shank
- Land Pride Post Hole Digger, 3 pt. w/ extra bit w/stand, Like New
- Roller, 6 ft.
- JD Breaking Plow, 5 bottom, trailer type
- Spin Spreader, 3 p. ht., Like New
- Disk, drag type
- Disk, 6 ft., 3 pt. ht., scalloped blades, front & rear
- IH Field Cultivator, 3 pt. ht., 6 ft.
- IH Field Cultivator, 21 ft

Many, many other items not listed



FIREARMS

We have been commissioned by a private collector to sell these firearms. All firearms selling at 11 A.M. On firearms only, there will be a 5% Administration fee added to final bid. Firearms are in storage, will be available for viewing day of sale

PISTOLS

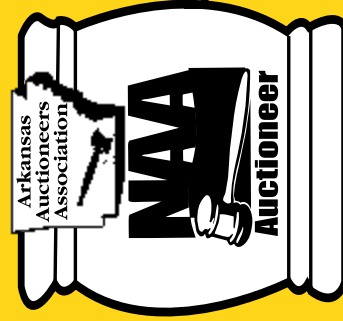
- Bersa Thunder 380, semi auto, nib
- Keltec P-11, 9mm, semi auto
- Secy-cpx, 9mm, semi auto, nib
- Smith & Wesson, 22 A, semi auto w/red dot scope
- Smith & Wesson, sigma, SW40F, 40 cal., semi auto
- Walther target, semi auto, 22, nib

RIFLES

- Savage #99F-243, single shot w/ scope
- Stevens #85, semi auto 22
- Stevens #86, Bolt 22
- Winchester #94, 30-30
- Winchester #70XTR, bolt, 35-06

OVER & UNDER

- Rossi S202244, single shot 22, w/20 ga. 44 mag. barrels



Gary N. Magee, Auctioneer

AR Lic. #3 – Est. 1970
3908 Heritage Park Road, Piggott, AR 72454
Phone 870-598-2689 • Cell 870-598-7334 • Fax 870-324-4117
Visit our website at www.garymageeauction.com

MAAGE AUCTION & BEAUFY

Ramona Magee, Broker

MISCELLANEOUS

- Aluminum Fishing Boat, 60x16 flat bottom, w/trailer and 25 hp motor
- 2-Aluminum Boats, 15 ½ ft, w/ trailers, 50 hp motors
- 2-Pcs. Steel Pipe Culverts, 20 & 30 ft.
- Pair of 20.8x 38R2 Tires on JD Rims
- Set of 18.4x38R2 Tires on JD Rims
- Pair of JD 20.8x38 Rims
- 2 Combine Tires w/ Rims, 28L26, Goodyear
- DeWalt Drill Set, 18 volt, drill, flashlight & saw
- New Insulation, 8 rolls for metal building
- Metal Roofing, commercial grade, 100 sheets, 8 & 10 ft.
- Deer Stand, quad, 12 ft.
- Aluminum Tool Boxes
- Retractable Hose Reel, 25 ft.
- Stihl Chain Saw #MS250
- Stihl Chain Saw #009L
- Spray Rig, 25 gallon
- Makita Chop Saw
- Schmacher Battery Charger
- Electric Pole Saw
- 3 Picnic Tables
- Chevy Blazer, 2003, 4x4

FUEL TANKS

- 500 gallon
- 300 gallon on skids
- 300 gallon, square w/12 volt elec. pump, works

CLAY COUNTY GOVERNMENT, HONORABLE COUNTY JUDGE MIKE PATTERSON, HAS CONSIGNED THE FOLLOWING EQUIPMENT TO THIS AUCTION

TRUCKS

- Freightliner, 1996 mo.
- Chevy Suburban, 2000 mo., 4x4
- Ford 1-ton, dually 3500, 1996 mo., 2 wheel drive
- GMC, ¾ ton, 2002 mo., 4 door, 4x4
- Chevy ½ ton Pickup, 1998 mo., 4x4
- Chevy Tracker, 1998 mo., 4x4
- Ford ½ ton Pickup, 1991 mo., 2 whl. Drive

VEHICLES

- Ford Crown Victoria, 1998 mo.
- Chevy Truck Bed Cover, 13 ft.
- Chevy Brush Guards
- Ram Brush Guards
- Sullivan Air Compressor w/jacks
- Laser Jet Printer HP mo.9040DN

ATV'S

- Polaris 500 Sportsman
- Yamaha Timber Wolf

MISCELLANEOUS

- 2-Fuel Tanks
- Chevy Truck Bed Cover, 13 ft.
- Chevy Brush Guards
- Ram Brush Guards
- Sullivan Air Compressor w/jacks
- Laser Jet Printer HP mo.9040DN

EQUIPMENT

- Ford 6640, Side Arm Bush Hog, power star SLE

EXISS LIVING QUARTERS 4-HORSE TRAILER



2011 mo., 16 ft. shortwall w/large glide-out, big bathroom.. Sofa & dining booth, lots of storage, ducted air, heat, mangers, hay rack, saddle storage, let down ramps, never smoked in, no pets, NICE

MINIMUM COMMISSION IS \$10 PER ITEM. THERE WILL BE A \$5 PER ITEM CHARGE TO BUYER ON ANY ITEM BRINGING \$100 OR MORE. ALL TITLES MUST BE TURNED INTO OFFICE PRIOR TO SALE OR BE SUBJECT TO A \$25.00 HANDLING CHARGE.